

# Newsletter

Term 1 Week 5 Thursday, 27 February 2020

## Principal's Message [principal@olmcsunbury.catholic.edu.au](mailto:principal@olmcsunbury.catholic.edu.au)

Dear Parents,

For the past 2 days, the school leadership team have participated in a conference regarding Agile Leadership. The days were very productive and enabled us time and space to discuss our school Annual Action Plan and to prioritise our focus for the year. This will be finalised over the next couple of weeks and I will share it with you once it is completed. Thank you to Mrs Lethlean for taking on the responsibility of leading the school in our absence and to the rest of the staff for their support as well.

Yesterday was Ash Wednesday and the beginning of the season of Lent. This is time for us all to reflect on how we can be more like Jesus. In the past the focus was on giving something up for the 40 days. We now are more likely to think of things we can take on that will make the world a better place for all. I encourage you to talk about this as a family and decide what it is that you can do.

Lenten reflection: Choose life, then, so that your descendants may live in the love of the Lord your God, obeying his voice, clinging to him". Deuteronomy 30:19-20

I reflect on the choices I have made this week and on their consequences.

I have had some queries about the shirts for winter. Unfortunately long sleeved shirts with the school emblem were not ordered by the manufacturer. As a result I am happy for this year only for the children to wear either a long sleeve white shirt without the emblem or a long sleeved white cotton top under the school short sleeved shirt. Please let me know if you would like further clarification.

I look forward to seeing you at the bush dance tomorrow evening. The picnic time begins at 5:30 and there will be sausages available or you may bring your own food. Please note that as this is a school event, there is to be no alcohol. I encourage everyone to dress up in bush gear and really get into the spirit of the night.

Don't forget our 160 years celebration on the 19<sup>th</sup> April. Mass will be celebrated at 10:30, followed by face painting, food trucks, a jumping castle and a petting farm. The school will be open for some of the time so if you know any past students or staff please invite them to come along. Thank you to the people working behind the scenes to make this a great celebration.

Our School Open Day will be held on Monday 16<sup>th</sup> March and enrolments will then be open. If you know of anyone with a child in 4 year old kinder please let them know the sessions are at 9:30am and 7pm.

Thank you to the parents who have offered to support our fundraising and community building endeavours. I would like to invite all parents to a meeting on Tuesday 24<sup>th</sup> March at 7pm. At this meeting we will discuss ideas and put dates on the calendar. You should have received a request for help with the Bunnings BBQ. The more people on the roster, the easier the load. It is not too late to put your name down.

Congratulations to the OLMC swim team who competed last Thursday evening in the Sunbury schools swimming carnival. Not only did we come home with the shield for the winners of the small section, we had the most points of all schools on the night. Well done to all swimmers and to Mr Tom for running the trials and selecting the team. Thank you to all the staff and parents who supported the team and to the staff at St Anne's for their running of the carnival.

Best wishes

Julie

53 Macedon St  
Sunbury 3429  
9740 7344

### School Closure

#### Days

#### Term 1

Fri March 20th

#### Term 2

Thur June 4th

### 2020 Term Dates

#### Term 1 :

Tue 28th January -  
Fri 27th March

(Easter : Fri 10th -  
Mon 13th April)

#### Term 2 :

Tue 14th April -  
Fri 26th June

#### Term 3:

Mon 13th July -  
Fri 18th September

#### Term 4:

Mon 5th October -  
Fri 16th December



## BUSH DANCE

Children are to wear their sports uniform and runners tomorrow .  
Please dress up when you return to the bush dance in the evening

### Sunbury Catholic Primary School's



#### Parish Enrolment Meeting for 2021

Thursday 12th March 2020

Two Sessions

9.30am and 7.00 pm

At

Sunbury Catholic Parish Centre  
Riddell Road, Sunbury  
(Next to St. Anne's Church)

---

#### School's Open Day

Monday 16th March 2020

Two Sessions

9.30 am and 7.00 pm

Guided tours of the school:

For more information regarding enrolment

St Anne's 8746 6800

Our Lady of Mount Carmel 9740 7344

Holy Trinity 8746 6464

Dear Parents,

The State Government have mandated that all parents are to be informed if their child is absent from school when the absence is unreported or unexplained. The response to this Legislation can be costly to the School. In order to avoid expensive software programs and human resources **we urge parents to report their child's absence via the Flexibuzz app before 9.00am.**

If your child will be late, we encourage you to also use the Flexibuzz app to advise the details of late arrival time or call the office directly to notify us before 9.00am to avoid the school contacting you unnecessarily.

If you change your contact details, please inform the School Office immediately.

## 2020 Dates – Please put these dates on your calendar

### March

3<sup>rd</sup> March 7:00pm and Wednesday 4<sup>th</sup> March 2pm – Information and registration sessions for Eucharist (Year 4 parents)

9<sup>th</sup> March – Labour Day Holiday – no school

10<sup>th</sup> and Wednesday 11<sup>th</sup> March – Year 3 and 4 camp

16<sup>th</sup> March—OLMC Open day

18<sup>th</sup> March – School photos

18<sup>th</sup> March – Prep Parenting In Faith 6:30pm – All prep parents and children

19<sup>th</sup> March – Interschool Athletics Carnival

20<sup>th</sup> March – Staff professional learning day – No school

27<sup>th</sup> March – Last day of term 1 – students finish at 3:15pm

### April

11<sup>th</sup> April – Bunnings BBQ – Help needed

12<sup>th</sup> April – Easter Sunday

14<sup>th</sup> April – Term 2 begins

19<sup>th</sup> April – 160 years celebration

20<sup>th</sup> – 22<sup>nd</sup> April – Year 5/6 Camp

28<sup>th</sup> April – Year 1 and 2 Parenting in Faith – all year 1 and 2 parents and children 6:30pm

### May

3<sup>rd</sup> May – Year 1 and 2 Family Mass 10:30am

6<sup>th</sup> May – Interschool Cross Country

7<sup>th</sup> May – Mothers Day Stall

8<sup>th</sup> May – Mothers Day High Tea or breakfast

11<sup>th</sup> May – Whole school sports day

### June

2<sup>nd</sup> June 7pm and 3<sup>rd</sup> June 2pm – Information and Registration session for Confirmation

4<sup>th</sup> June – staff professional learning day – no school

5<sup>th</sup> June – Year 5/6 Winter Round Robin

8<sup>th</sup> June – Queen's birthday holiday – no school

10<sup>th</sup> and 11<sup>th</sup> June 6:30pm – Eucharist Thanksgiving meal for year 4 students and parents

26<sup>th</sup> June - Last day of term 1 students finish at 3:15pm

### July

13<sup>th</sup> July – Term 3 begins

15<sup>th</sup> July – OLMC Feast Day

### August

1<sup>st</sup>, 2<sup>nd</sup>, 8<sup>th</sup>, 9<sup>th</sup> August –First Eucharist Dates

11<sup>th</sup> August 7pm and 12<sup>th</sup> August 2pm - Information and Registration session for Reconciliation – year 3 parents

25<sup>th</sup> August – Year 6 Confirmation parenting in faith – all year 6 parents and students

### September

1<sup>st</sup> September 6:30pm - Year 3 Reconciliation parenting in faith – all year 3 parents and students

3<sup>rd</sup> September – Fathers Day Stall

4<sup>th</sup> September – Fathers Day Breakfast

18<sup>th</sup> September – End of term 3 – students finish at 3:15pm

### October

5<sup>th</sup> October – Term 4 begins

6<sup>th</sup> October - Year 5 Human Sexuality evening – All year 5 parents and children

13<sup>th</sup> October – Reconciliation for Confirmation candidates

15<sup>th</sup> October – Confirmation Practice Day

18<sup>th</sup> Confirmation – Sacrament of Confirmation 2pm and 4pm

### November

2<sup>nd</sup> November – School Closure Day

3<sup>rd</sup> November – Melbourne Cup Day – no school

24<sup>th</sup> and 25<sup>th</sup> November – Sacrament of Reconciliation 5pm and 7pm

### December

3<sup>rd</sup> December –Whole school Carols evening


14<sup>th</sup> December – Year 6 Graduation

16<sup>th</sup> December – Last day of term 4 for students

# SPLASH PUPIL OF THE WEEK AWARD



Class	Pupil of the week	Has demonstrated the 3 R's
<b>Prep JR</b>	Robby Mand	For his responsible attitude in organising and taking care of his belongings. Great effort Robby!
<b>Prep MR</b>	Georgia DeBrincat	For being such a positive and resilient member of our class. Well Done Georgia
<b>1 H</b>	Jai Pansino	For working collaboratively with others and great SMART spelling work
<b>1 S</b>	Audrina Cole	For contributing to class discussions during maths this week. Keep it up !
<b>2 JB</b>	Mahika Chand	For showing respect to other students when making pancakes on Shrove Tuesday by waiting patiently for her turn.
<b>2R</b>	Zahra D'Agostino	For leaping into the learning pit and showing enthusiasm and determination during Auslan lessons.
<b>3BC</b>	Ben Carter	For being an outstanding risk taker who takes on challenges and tries new things!
<b>3CC</b>	Zac Hills	For being an enthusiastic and self motivated learner and putting forward his best effort into his work.
<b>4PS</b>	Jaida Kelly	For being such a terrific example of the 3R's in our classroom!
<b>4SF</b>	Ellie Bonnitche	For using the dispositions of determination and risk taking to make huge improvements in her handwriting.
<b>5/6 C</b>	Jaiden Doricic	For approaching all tasks with enthusiasm and determination.
<b>5/6 MT</b>	Jesse McDonald	For showing the disposition of self motivation by responding to feedback and working to improve his writing piece.
<b>5/6R</b>	Alyssa Blancato	For showing persistence in reading and working hard to achieve her individual goals.



Join us as we  
celebrate

**OUR LADY OF MT CARMEL'S  
160TH  
ANNIVERSARY**




**FOREVER FAITHFUL**

**SUNDAY | APRIL 19 | 1030AM**

**CELEBRATION MASS AT OLMC PARISH  
FOLLOWED BY  
ACTIVITIES FOR THE WHOLE FAMILY  
& FOOD TRUCKS**

**53 Macedon St, Sunbury**



## IMPORTANT UP COMING DATES—2020

Term 1	
<b>February</b>	
28	Bush Dance—5.30pm for 6.00pm start
<b>March</b>	
3	Eucharist information & registration—7pm
4	Eucharist information & registration—2pm
9	Labour Day Public holiday
10 & 11	Year 3 & 4 Camp
12	Prep 2021 Enrolment Information meeting 9.30 & 7.00pm
13	Casual clothes day—(Easter raffle donations requested)
16	OLMC School OPEN DAY 9.30 am & 7.00pm
18	School Photos Easter raffle tickets to be returned Prep Faith family Programme—6.30pm
19	Interschool Athletics Carnival
20	School Closure Day—Staff Professional Learning
25	Easter raffle drawn
27	Last day of term 1—3.15 finish
<b>April</b>	
10	Good Friday
11	Bunnings BBQ
12	Easter Sunday
<b>Term 2</b>	
14	Term 2 begins
19	160th years celebration

### Prayer Roster

**Thursday** 2.45pm

[Please note new day for prayer](#)

OLMC Church

Date	Class Presenting
27th February	<b>No school prayer</b>
5th March	3BC
12th March	5/6 R
19th March	4 SF
26th March	5/6 C

## OUR LADY OF MT. CARMEL CANTEEN ROSTER TERM 1, 2020

28 <sup>th</sup> Feb	Belinda Falzon Pout Nancy Carlyle	20 <sup>th</sup> Mar	Paula Jarski Adele Dichiera Danni Caruana
6 <sup>th</sup> Mar	Caroline Dillon Cathy Carter Joanne Borgese	27 <sup>th</sup> Mar	Danielle Wadden Jade Grech Christine De Veth
13 <sup>th</sup> Mar	Emma Clements Shelley Spark Antoinetta Preston		Due to earlier lunch time volunteers will be required to start at 10.15 am  Thank you Sally

Thank you for volunteering to help in the Canteen, it would be impossible without you! Please arrive at Canteen at 10.15am, and your assistance will be required until around 2.30pm. If you have long hair, please tie it back, and remember to sign in at the office before coming to the Canteen. Your lunch will be provided on the day.

**If you are unable to attend on your rostered day** please ring Sally on 0400 384 403, as soon as possible so a replacement can be arranged.

I look forward to seeing you,

**Sally Hewitt-Tacey**

### OLMC Bell Times

<b>8.45am</b>	First school bell
<b>8.55am</b>	Classes commence
<b>11.00–11.30am</b>	Recess time
<b>12.50 - 1.00pm</b>	Eating time
<b>1.00–1.40pm</b>	Lunch time
<b>3.15pm</b>	End of school day



Stay in touch with FlexiBuzz

- STEP  
01

**Sign up for FlexiBuzz and then login**

Search "FlexiBuzz" in your app store.

Go to [web.flexibuzz.com](http://web.flexibuzz.com) and click "Sign Up".
- STEP  
02

**Connect to us**

Select the "Search" icon and type in our name. Select us from the results.
- STEP  
03

**Select your communication groups**

Click the "Add" icon beside the communication groups that apply to you.
- STEP  
04

**Get started**

Click the "Home" icon to view our recent posts.

For further information or assistance please visit our website [www.flexibuzz.com](http://www.flexibuzz.com) or email us via [support@flexibuzz.com](mailto:support@flexibuzz.com).

**FlexiBuzz**

## HELP US TO HELP THE ENVIRONMENT - RECYCLE WITH TERRACYCLE

A box is located at the School Office for all your non-recyclable oral care packaging.

### What kinds of packaging are acceptable?

We accept any brand of used toothpaste tubes, toothbrushes, plastic toothbrush packaging (excluding cardboard), electric toothbrush heads, interdental brushes, wisps, pumps, stand up toothpaste bottles and any kind of non-electric toothbrush or toothpaste tube and all affiliated non-recyclable packaging.

Please use the full product before sending it in.

### How much will my organisation be paid for the Oral Care Brigade?

For each shipment over one kilogram, we will earn 2 points or \$.02 per unit for the school.

## RECYCLE YOUR ORAL CARE PACKAGING AT OLMC!

Every year, thousands of used pieces of oral care product packaging ends up in landfills across Australia.

Colgate and TerraCycle have partnered to give a second life to your used oral care packaging. The Colgate Oral Care Recycling Program allows us to collect and recycle this oral care product packaging, to prevent it from ending up in landfill.

Rather than ending up in the environment, the used oral care packaging is melted, and remoulded to make new recycled products.



Drop off your waste at...  
OLMC SCHOOL OFFICE



Your collection leader is...  
MELISSA BONAVIA  
(phone)  
03 9740 7344  
(contact information)



The more you recycle, the more money we raise!

Learn more at [www.terraCycle.com.au](http://www.terraCycle.com.au).

TerraCycle®, the TerraCycle Logo® are property of TerraCycle, Inc. used under license. ©2019



## FINANCIAL ASSISTANCE INFORMATION FOR PARENTS

Every Victorian child should have access to the world of learning opportunities that exist beyond the classroom. The Camps, Sports and Excursions Fund helps ensure that no student will miss out on the opportunity to join their classmates for important, educational and fun activities. It is part of making Victoria the Education State and the Government's commitment to breaking the link between a student's background and their outcomes.

### CAMPS, SPORTS & EXCURSIONS FUND (CSEF)

School camps provide children with inspiring experiences in the great outdoors, excursions encourage a deeper understanding of how the world works and sports teach teamwork, discipline and leadership. All are part of a healthy curriculum.

CSEF is provided by the Victorian Government to assist eligible families to cover the costs of school trips, camps and sporting activities.

If you hold a valid means-tested concession card or are a temporary foster parent, you may be eligible for CSEF. A special consideration category also exists for asylum seeker and refugee families. The allowance is paid to the school to use towards expenses relating to camps, excursions or sporting activities for the benefit of your child.

The annual CSEF amount per student is:

- \$125 for primary school students
- \$225 for secondary school students

---

### MORE INFORMATION

For more information about the CSEF visit [www.education.vic.gov.au/csef](http://www.education.vic.gov.au/csef)

### HOW TO APPLY

New applicants should contact the school office to obtain a CSEF application form or download from [www.education.vic.gov.au/csef](http://www.education.vic.gov.au/csef)

If you applied for the CSEF at your child's school in 2019, you do not need to complete an application form in 2020 unless there has been a change in your family circumstances.

You only need to complete an application form if any of the following changes have occurred:

- **new student enrolments**; your child has started or changed schools in 2020 or you did not apply in 2019.
- **changed family circumstances**; such as a change of custody, change of name, concession card number, or new siblings commencing at the school in 2020.

Check with the school office if you are unsure.



**CAMPS, SPORTS AND EXCURSIONS FUND (CSEF) APPLICATION FORM**

Our Lady of Mount Carmel School

E1038

School Name

School REF ID

**Parent/legal guardian details**

Surname \_\_\_\_\_

First name \_\_\_\_\_

Address \_\_\_\_\_

Town/suburb \_\_\_\_\_ State \_\_\_\_\_ Postcode \_\_\_\_\_

Contact number \_\_\_\_\_

Centrelink pensioner concession **OR** Health care card number (CRN)

-    -    -  **OR**

Foster parent\* **OR**  Veterans affairs pensioner (Gold Card)\*\*

\*Foster Parents must provide a copy of the temporary care order letter from the Department of Health and Human Services (DHHS).

\*\*Applicants must provide a copy of the Veteran Affairs Gold card

**Student details**

Child's surname	Child's first name	Student ID	Date of birth (dd/mm/yyyy)	Year level

I authorise the Department of Education and Training (DET) to use Centrelink Confirmation eServices to perform an enquiry of my Centrelink customer details and concession card status in order to enable the business to determine if I qualify for a concession, rebate or service. I also authorise the Australian Government Department of Human Services (DHS) to provide the results of that enquiry to DET.

I understand that:

- DHS will use information I have provided to DET to confirm my eligibility for the Camps, Sports and Excursions Fund and will disclose to DET personal information including my name, address, payment and concession card type and status.
- this consent, once signed, remains valid while my child is enrolled at a registered Victorian school unless I withdraw it by contacting the school.
- I can obtain proof of my circumstances/details from DHS and provide it to DET so that my eligibility for the Camps, Sports and Excursions Fund can be determined.
- if I withdraw my consent or do not alternatively provide proof of my circumstances/details, I may not be eligible for the Camps, Sports and Excursions Fund provided by DET.
- information regarding my eligibility for the Camps, Sports and Excursions Fund may be disclosed to the Victorian Department of Health and Human Services and /or State Schools Relief for the purpose of evaluating concession card services or confirming eligibility for assistance.

You are able to request access to the personal information that we hold about you, and to request that any errors be corrected, by contacting your child's school.

Signature of applicant \_\_\_\_\_

Date \_\_\_\_ / \_\_\_\_ / \_\_\_\_

## CSEF ELIGIBILITY

Below is the criteria used to determine a student's eligibility for the Camps, Sports and Excursions Fund (CSEF).

### Criteria 1 – Eligibility

To be eligible\* for the fund, a parent or legal guardian of a student attending a registered Government or non-government Victorian primary or secondary school must:

- on the first day of Term one, or;
  - on the first day of Term two.
- a) Be an eligible beneficiary within the meaning of the State Concessions Act 2004, that is, be a holder of Veterans Affairs Gold Card or be an eligible Centrelink Health Care Card (HCC) or Pensioner Concession Card (PCC) holder, OR
- b) Be a temporary foster parent, and;
- c) Submit an application to the school by the due date.

\* A special consideration eligibility category also exists. For more information, see:

[www.education.vic.gov.au/about/programs/Pages/csef.aspx](http://www.education.vic.gov.au/about/programs/Pages/csef.aspx)

Parents who receive a Carer Allowance on behalf of a child, or any other benefit or allowance not income tested by Centrelink, are not eligible for the CSEF unless they also comply with one of (a) or (b) above.

### Criteria 2 - Be of school age and attend school in Victoria

School is compulsory for all Victorian children aged between six and 17 years of age inclusive.

For the purposes of CSEF, students may be eligible for assistance if they attend a Victorian registered primary or secondary school. Typically, these students are aged between five and 18 years inclusive.

CSEF is not payable to students attending pre-school, kindergarten, home schooled, or TAFE.

### Eligibility Date

For concession card holders CSEF eligibility will be subject to the parent/legal guardian's concession card being successfully validated with Centrelink on the first day of either term one (28 January 2020) or term two (14 April 2020).

## PAYMENT AMOUNTS

### CSEF payment amount

The CSEF is an annual payment to the school to be used towards camps, sports and/or excursion expenses for the benefit of the eligible student.

- Primary school student rate: \$125 per year.
- Secondary school student rate: \$225 per year.

The CSEF is paid directly to your child's school and will be allocated by the school towards camps, sports and/or excursion costs for your child.

For ungraded students, the rate payable is determined by the student's date of birth. For more information, see:

[www.education.vic.gov.au/about/programs/Pages/csef.aspx](http://www.education.vic.gov.au/about/programs/Pages/csef.aspx)

**Year 7 government school students** who are CSEF recipients are also eligible for a uniform voucher. Secondary schools are required to make applications on behalf of parents so please register your interest at the school.

## HOW TO COMPLETE THE APPLICATION FORM

### NOTE: ALL SECTIONS MUST BE COMPLETED BY PARENT/LEGAL GUARDIAN

1. Complete the PARENT/LEGAL GUARDIAN DETAILS section.  
Make sure that the Surname, First Name, and Customer Reference Number (CRN) details match those on your concession card. You will also need to provide your concession card to the school.  
If you are claiming as a Foster Parent or a Veteran Affairs Pensioner, you will need to provide a copy of documentation confirming your status as a temporary Foster Parent or provide your Veterans Affairs Pensioner Gold card to the school.
2. Complete the STUDENT/S DETAILS section for students at this school.
3. Sign and date the form and return it to the school office as soon as possible. The CSEF program for 2020 closes on 26 June, 2020.

CSEF payments cannot be claimed retrospectively for prior years.

**Queries relating to CSEF eligibility and payments should be directed to the school.**

## School Uniform News:

School Socks available for sale from the school office

**\$5 Cash only**—correct money appreciated



ABN: 53 317 404 573

### AGS Pty Ltd

Wholesalers of Quality Schoolwear & Uniforms  
In house Design & Printing

[www.aplusschoolwear.com.au](http://www.aplusschoolwear.com.au)

ADDRESS: 133 BAKERS ROAD  
NORTH COBURG  
VIC, 3058

PHONE: 03 9354 8345

FAX: 03 9354 5777

E-MAIL: [info@agsprints.com.au](mailto:info@agsprints.com.au)



## School Banking day is Tuesday

This week 25 students banked \$192.60. Great effort everyone

## Community News:

FRIDAY MARCH 6TH

# MOVIE NIGHT

How to Train Your Dragon 3

FUNDRAISING FOR PETS HAVEN

TICKETS CAN BE PURCHASED VIA @SUNBURYENGAGE ON FACEBOOK

\$10 ENTRY  
101 RIDDELL RD,  
SUNBURY  
6:30 ONWARDS

Rescue FUNDRAISERS

Community Family Fun Day

Free Entry

Bushfire Fundraiser  
100% donations to fire victims

Fairy Floss

Jumping Castle

BYO Picnic

12 noon Saturday 29 February until 5pm

Sunbury Baptist Church 207 Gap Road

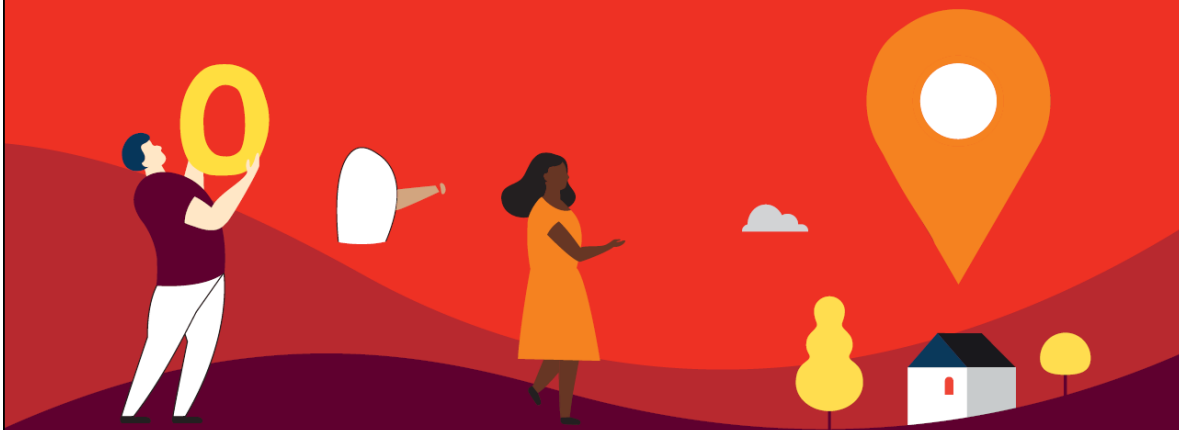
Children's Jumping Castle and activities including: Face-Painting, Sausage Sizzle, Games, Coffee Van, Fairy Floss, Popcorn & more

For all bookings:

<https://www.trybooking.com/BGVJB>

# Give life. Give blood in Sunbury.

**Hume Global Learning Centre - Sunbury**  
23rd to 27th March



Monday 23rd March  
Tuesday 24th March  
Wednesday 25th March  
Thursday 26th March  
Friday 27th March

12.30pm – 7.00pm  
12.00pm – 7.00pm  
12.00pm – 7.00pm  
1.00pm – 7.00pm  
8.00am – 3.00pm

 **give blood**